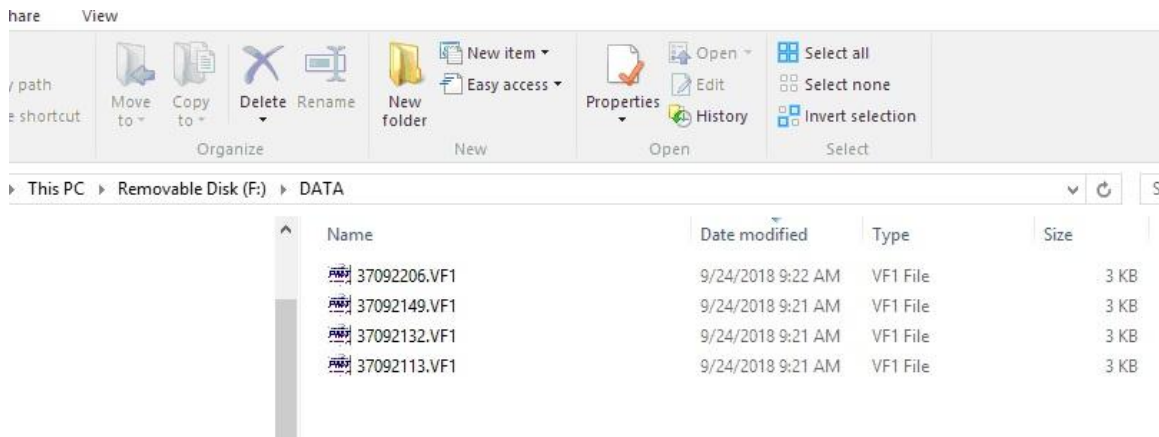
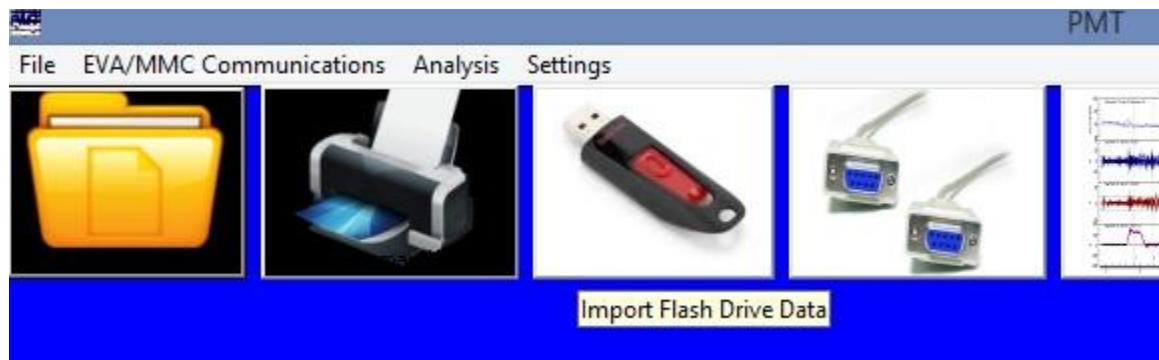


Importing Files from the USB Flash Drive

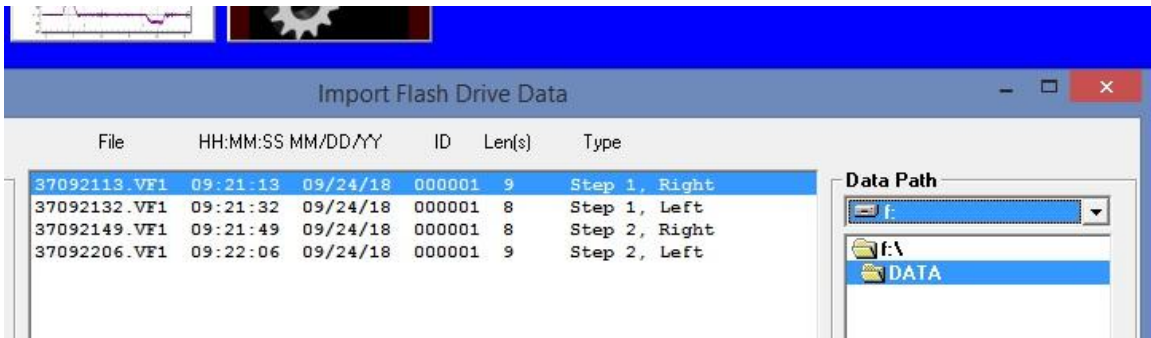
The EVA-625/MMC-1 stores recorded events on a handheld USB Flash Drive which is inserted into the USB Jack on the keyboard of the instrument. The EVA-625/MMC-1 stores recordings on the flash drive as a file with the extension .VF1, located on the flash drive, in a subfolder named DATA. Below is an example of a set of 4 Escalator Step/Skirt Performance Index Recordings, viewed through Windows Explorer.



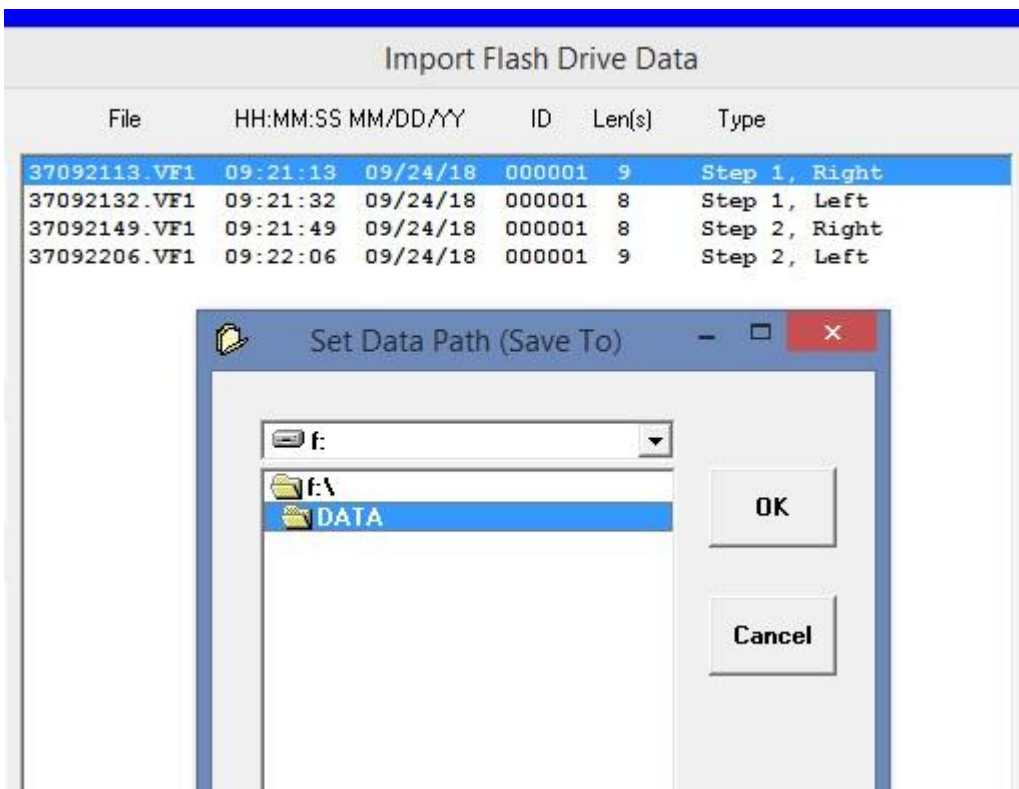
The Files CANNOT be analyzed directly, they MUST be imported using the EVA-875 Software, Version 8.75.1000 or higher. Insert the Flash Drive into the PC, then open the EVA875 software. Select the Flash Drive Icon Shown below;



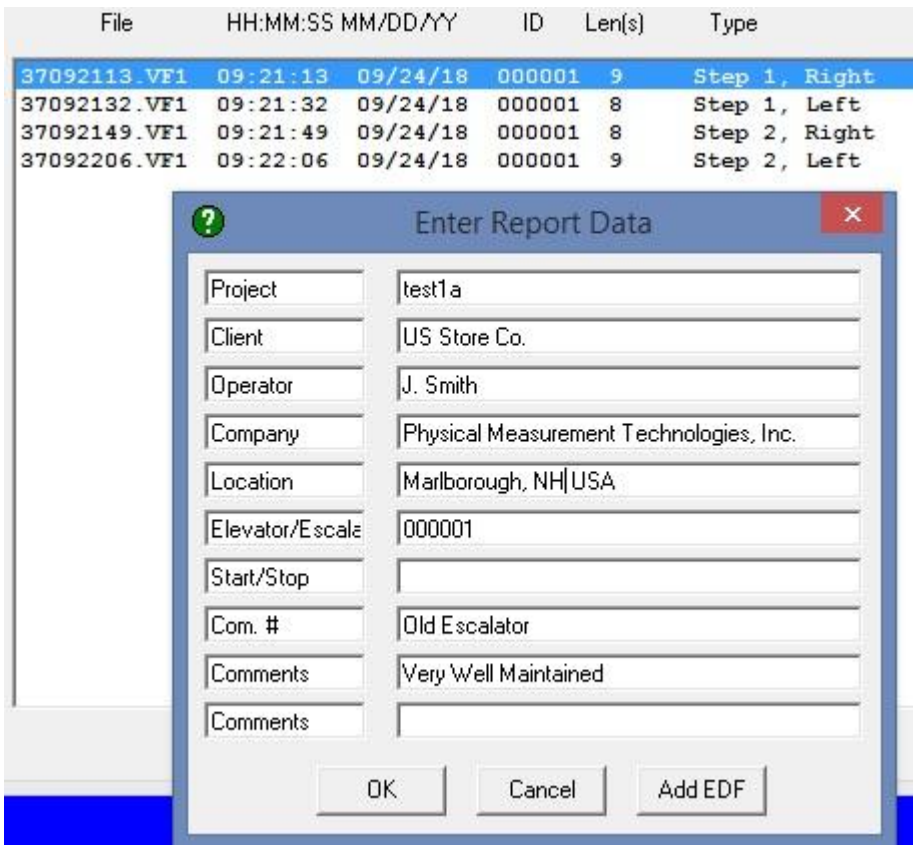
You will then need to select the appropriate Drive Letter (F:\ for example) then in the subwindow, DOUBLE CLICK on the DATA folder to bring up files in the Import Window.



The next step is to click Import All and set the Data Path for the location of the new, imported files. You can leave it on the Flash Drive as shown below, or navigate to a location you have created on your Hard Drive, then click OK.



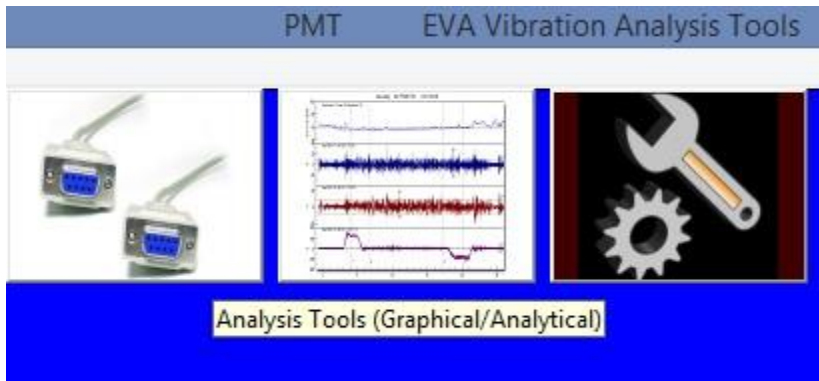
The Software will then provide an opportunity to Enter Report Data associated with the measurements. All information is stored with the files, however, in the case of the Step/Skirt Performance tests, only the field next to Project and the Elevator/Escalator ID# are displayed.



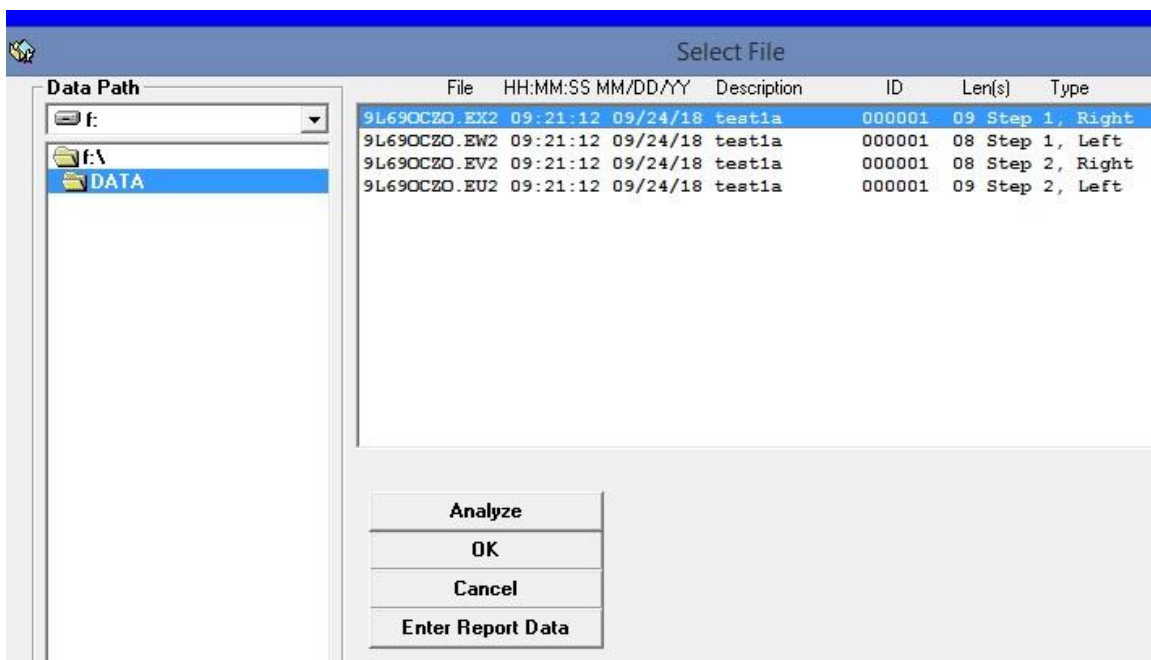
Once you are ready, click OK and a new file will be created from each .VF1 file. The software should show OK next to each.

| File | HH:MM:SS | MM/DD/YY | ID | Len(s) | Type | |
|--------------|----------|----------|--------|--------|---------------|----|
| 37092113.VF1 | 09:21:13 | 09/24/18 | 000001 | 9 | Step 1, Right | OK |
| 37092132.VF1 | 09:21:32 | 09/24/18 | 000001 | 8 | Step 1, Left | OK |
| 37092149.VF1 | 09:21:49 | 09/24/18 | 000001 | 8 | Step 2, Right | OK |
| 37092206.VF1 | 09:22:06 | 09/24/18 | 000001 | 9 | Step 2, Left | OK |

Then click Finish to return to the Main Menu. You can now analyze the newly imported files. Click on the Analysis Tools Icon.



Select the File you wish to analyze by clicking on it, then click Analyze.



When analyzing Step/Skirt Index Tests it is only necessary to select one of the four, grouped recordings and all four will be displayed on a 1 page graph/report.

